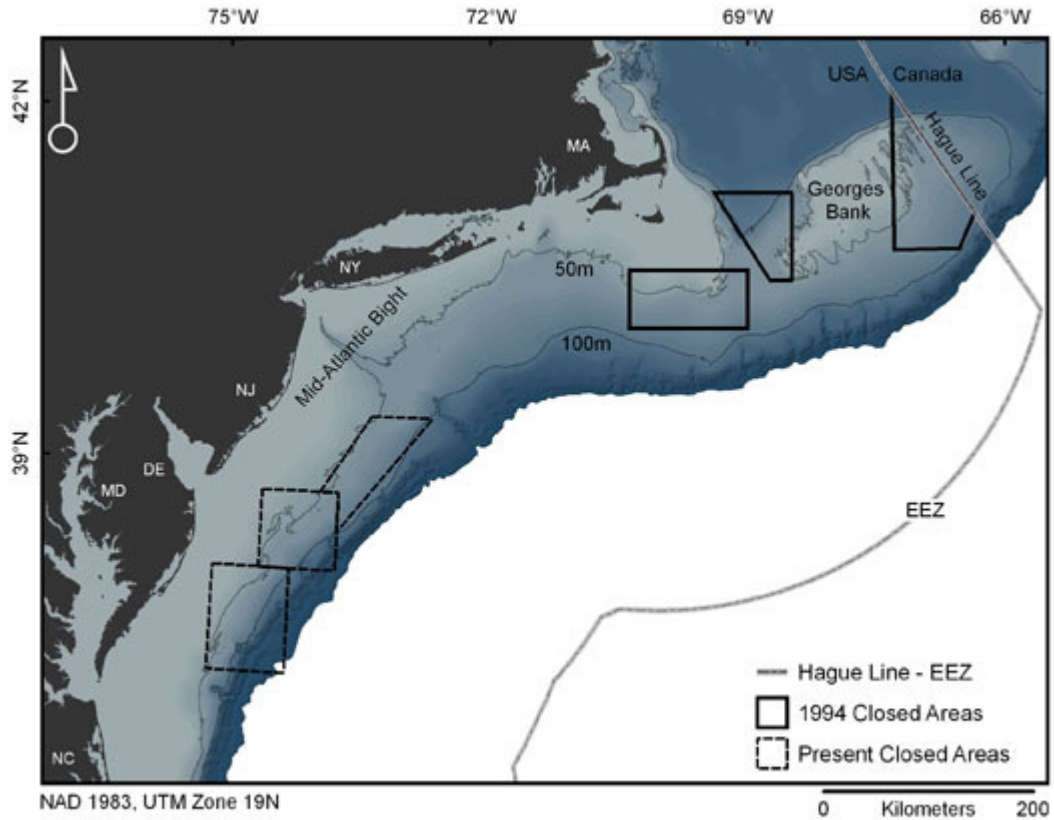


Find Your Way



1. Draw a compass rose on the map. (There is an indicator of north in the top left hand corner.)
2. To sail from Georges Bank to the 1994 closed area (shaped like a rectangle) you must sail in what direction? _____
3. To sail from the square shaped present closed area to New Jersey you must sail in what direction? _____
4. Georges Bank is a large area. Darken the Hague Line that lies east of Georges Bank.
5. To sail from 72°W Longitude to 69°w Longitude, you must sail in what direction?
